

2024-01-02

# Getting Started with SAP Business One 10.0, version for SAP HANA on SAP Cloud Appliance Library



---

# Table of Contents

1	Appliance Template Information.....	3
1.1	Installed Products.....	3
1.2	Overview .....	3
2	Accessing Appliance Template .....	4
2.1	Overview .....	4
2.2	Windows Frontend Server Details.....	4
2.3	SAP HANA Server Details.....	4
2.4	SAP Business One Details .....	5
2.5	OS Users and Groups.....	5
2.5.1	Accessing Your Appliance on OS Level.....	6
3	Licenses .....	7
4	Security Aspects .....	8
5	Working with Appliance Templates via SAP Cloud Appliance Library .....	9
6	Appendix .....	10

# 1 Appliance Template Information

## 1.1 Installed Products

You get access to a system (landscape) that has been built using the following installation media:

- SAP Business One 10.0 FP2405, version for SAP HANA
- SAP Crystal Reports 2020 SP4 for SAP Business One
- SAP HANA Platf. Ed.2.0 SPS5 Rev. 59.09
- SAP HANA Studio 2.3.68 (59.04) Windows x64B

## 1.2 Overview

- SAP Business One 10.0 FP2405, version for SAP HANA
- This preconfigured appliance of SAP Business One 10.0 FP2405, version for SAP HANA is only designed for DEMO and for evaluation purposes. All managed systems are simulated. The appliance template will help you to jumpstart DEMO projects in the public cloud requiring a preconfigured system setup.
- When creating the appliance in advanced mode, you can define in Step 5: “Appliance Template Properties” a demo database and HANA Model Language. By default the demo database of Great Britain’s localization is installed.

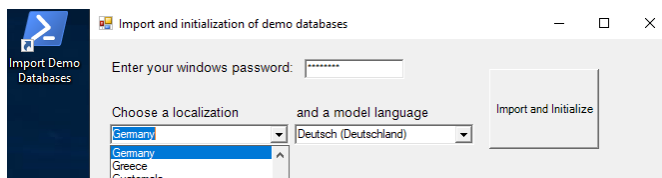
5. Appliance Template Properties

Specify the values of the additional properties defined for this appliance template. For more information about a property, click the Info icon next to the value.

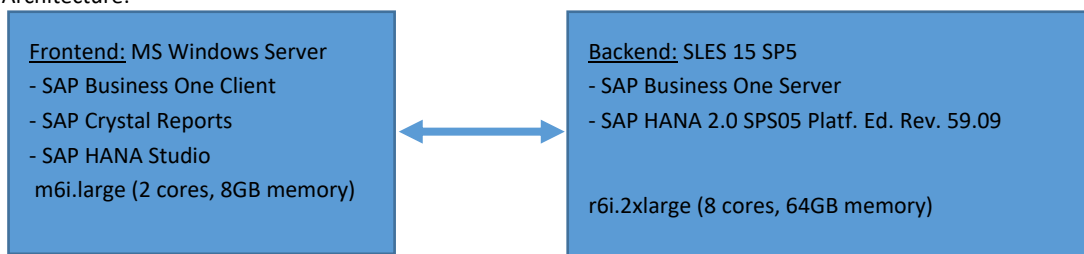
Name	Value
<b>Windows Remote Desktop</b>	
Demo_Database*	SBODEMOGB
HANA_Model_Language*	en_GB

**Step 6**

- Further localized demo databases can be imported via the import tool on the desktop of the MS Windows Server frontend.



- This appliance requires to run with direct access to internet (default VPC with internet gateway). Nondefault VPCs which require a proxy or VPN are not supported. See What is Amazon VPC user guide.
- Architecture:



## 2 Accessing Appliance Template

### 2.1 Overview

SAP Business One 10.0 FP2405, version for SAP HANA Client can be opened via the desktop of the frontend server

The backend server can be accessed via putty, RDP or vnc client (using root user) and via SMB network share [\\sid-hdb](#)

### 2.2 Windows Frontend Server Details

Connect to the Frontend server using the information in the table below. You can also configure manually your Remote Desktop client.

For more information, how to connect to the Frontend Server, see [Connecting to an Appliance](#).

Name	Value	Description
IP Address	<IP Address>	The IP address of your frontend server instance you created in SAP CAL.
User	Administrator	User for the Windows frontend server. Note: Only one user is allowed to logon at the front-end server at the same point in time.
Password	<Master Password>	The initial master password of the system you provided in the SAP Cloud Appliance Library when creating the appliance.

#### **Note to SAP employees:**

If your appliance is running on SAP internal images, the OS level users might be different. For more information, navigate to the **Info** section of your appliance details in the SAP Cloud Appliance Library Console.

### 2.3 SAP HANA Server Details

Connect to SAP HANA using the information in the table below.

For more information, how to connect to the Frontend Server, see [Connecting to an Appliance](#).

Name	Value	Description
SID	HDB	System ID of the SAP system
Instance Number	00	The instance number of the central instance (CI)
Tenant Database	HDB	Tenant Database used for the SAP Business One installation

Name	Value	Description
Username	B1ADMIN	This is the standard SAP HANA user used for the SAP Business One installation

## 2.4 SAP Business One Details

Connect to SAP Business One using the information in the table below.

For more information, how to connect to the Frontend Server, see [Connecting to an Appliance](#).

Name	Value	Description
Username	manager	Default superuser of every demo database
Password	manager	Default password of manager user
Username	B1SiteUser	Technical user for the System Landscape Directory: <a href="https://sid-hdb:40000/ControlCenter">https://sid-hdb:40000/ControlCenter</a>
Password	<Master Password>	
Username	B1iadmin	Default administrator user of the Integration Framework for SAP Business One: <a href="http://127.0.0.1:8080">http://127.0.0.1:8080</a>
Password	<Master Password>	
Web Client		Access the SAP Business One Web Client via <a href="https://sid-hdb">https://sid-hdb</a>

## 2.5 OS Users and Groups

Name	Description
<sid>adm	SAP system administrator (linux user)
root	Linux administrator. Password for RDP connection is <MasterPassword>
sapsys	Group containing all <SID>adm users (should be a group in a central user storage like LDAP, NIS, or Active Directory)

### **Note to SAP employees:**

If your appliance is running on SAP internal images, the OS level users might be different. For more information, navigate to the **Info** section of your appliance details in the SAP Cloud Appliance Library Console.

---

## 2.5.1 Accessing Your Appliance on OS Level

For information on how to access an appliance on OS level, go to [this document](#) and check this question: **How to connect to a running appliance via the secure shell protocol (SSH)?**

Besides SSH you can login to Linux using the RDP protocol. Login, using the Linux administrator user: root and the <MasterPassword> as password.

---

## 3 Licenses

### 3.1 Running Appliance Template with a Developer License

This appliance template can be used for development purpose under the perpetual Developer License Agreement. Note that you can install only “Minisap” license keys that can be renewed as long as you adhere to the Terms and Conditions of the Developer License Agreement.

Please note that the SAP Business One 10.0, version for SAP HANA license can't be renewed for the same appliance/ hardware key. When the “Minisap” license key is expired you can terminate the appliance or continue by either only using the remaining installed SAP developer applications such as SAP HANA Platform Edition or migrate to Product License Agreement by contacting us at [cal.admin@sap.com](mailto:cal.admin@sap.com).

### 3.2 License Keys Installation

Once you create the appliance in SAP Cloud Appliance Library, the SAP system will generate a temporary license key that is sufficient to logon to the system. As a first step before using the system you need to install a Minisap license as follows:

For example, Developer License Agreement:

1. HDB - SAP HANA Platform Edition (64GB)
2. B01 - SAP Business One 10.0, version for SAP HANA

For requesting “Minisap” license keys, see <https://go.support.sap.com/minisap>.

SAP Business One specific documentation is available on [Importing a License Key File](#) and [Allocating Licenses](#).

## 4 Security Aspects

Be aware that creating your appliances in the public zone of your cloud computing platform is convenient but less secure. Ensure that only port 22 (SSH) is opened when working with Linux-based appliance templates and port 3389 (RDP) when working with Windows based appliance templates. In addition, we also recommend that you limit the access to your appliances by defining a specific IP range in the Access Points settings, using [CIDR notation](#). The more complex but secure alternative is to set up a virtual private cloud (VPC) with VPN access, which is described in [this tutorial](#).

The list below describes the ports opened for the security group formed by the server components of your appliance:

To access back-end servers on the operating system (OS) level, use the following information:

Protocol	Port	Description
SSH	22	Used for SSH connection to Linux-based servers
RDP	3389	Used for RDP connection to Linux-based servers
RDP	3389	Used for RDP connection to Windows based servers
HTTPS	443	SAP Business One Web Client
HTTPS	55000	SAP Business One Service Layer (OData API)
HTTPS	40000	SAP Business One Landscape Directory
HTTPS	40020	SAP Business One Authentication Service

You must change the initial user passwords provided by SAP when you log onto the system for the first time.

Note that when using HANA based appliances, HANA systems are not installed individually but cloned from a template system. Because of this cloning process, the existing root keys are cloned. For more information, see this [SAP Note 2134846 - HANA encryption key handling during system cloning](#).

---

## 5 Working with Appliance Templates via SAP Cloud Appliance Library

If you have a user in SAP Cloud Appliance Library, you need to meet the following prerequisites before starting to use the SAP Cloud Appliance library:

- Cloud Provider Configurations

You have a valid account in one of the cloud providers supported by SAP Cloud Appliance Library. If you already have an active cloud provider account, you can proceed directly with the next section. Otherwise, navigate to the cloud provider home page and sign up.

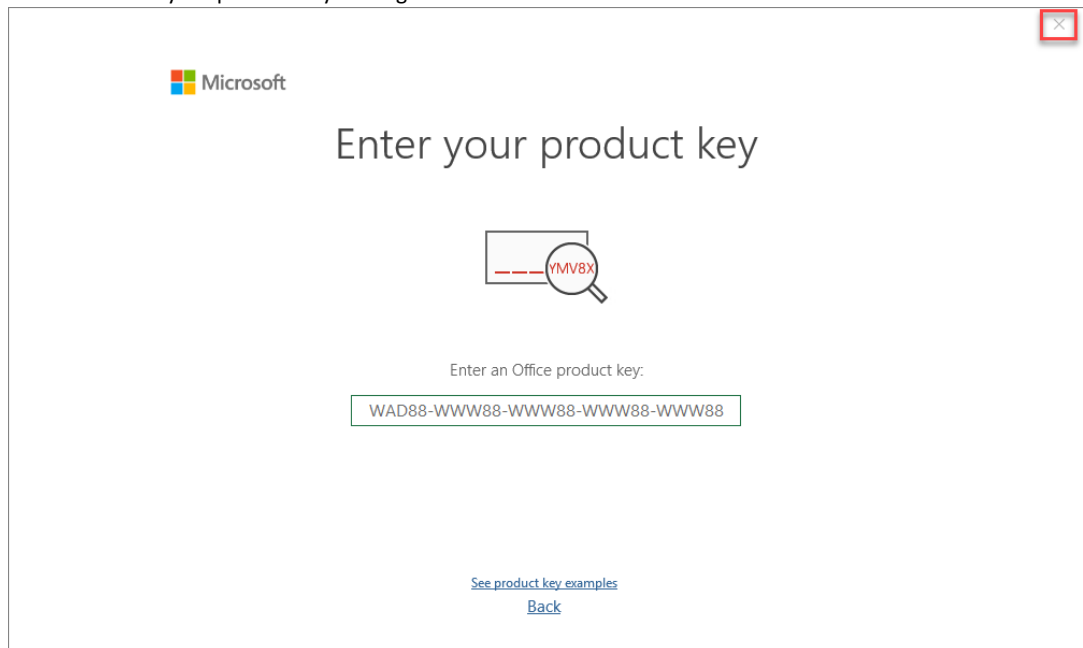
- Navigate to SAP Cloud Appliance Library

Open the SAP Cloud Appliance Library in your Web browser using the following link: <https://cal.sap.com>

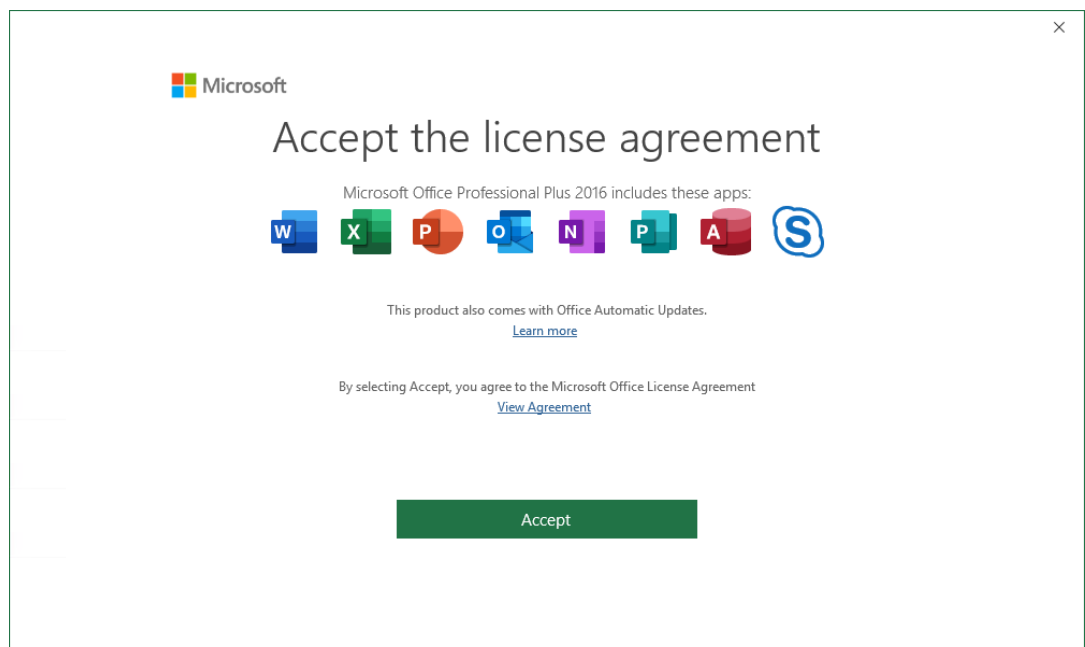
To familiarize yourself how to use appliance templates via SAP Cloud Appliance Library, go to [this topic](#).

## 6 Appendix

1. For **SAP Business One 10.0 FP2405, version for SAP HANA**, you can import further demo databases with this procedure:
  - a. Start the import\_tool on the Windows desktop on the frontend server
  - b. Enter the SAP CAL master password, defined in the creation process of the CAL appliance.
  - c. Choose a desired localization
  - d. Choose a desired model language
  - e. Click on Import and Initialize
  - f. Be patient and wait until the import and the initialization is finished
2. For **Microsoft Office 2016 Professional Plus**, which uses a [Generic Volume License Key](#) with a grace period of 180 days, you need to follow these instructions to start the grace period :
  - a. Start a Microsoft Office program such as Microsoft Excel 2016
  - b. Close the “Enter your product key” dialog



- c. Click on Accept and then on Close



---

PLEASE NOTE: Your use of this software is subject to the terms and conditions of the license agreement by which you acquired this software. For instance, if you are a MSDN customer, use of this software is subject to the MSDN agreement.

### Installed Software Components

Name	Release	Support Package Stack
SAP Business One, version for SAP HANA	10.0	FP2405
SAP HANA Platform Edition	2.0	SPS05 rev. 59.09
SAP Crystal Reports for SAP Business One	2020	SP4

[www.sap.com/contactsap](http://www.sap.com/contactsap)



© SAP SE or an SAP affiliate company. All rights reserved. See Legal Notice on [www.sap.com/legal-notice](http://www.sap.com/legal-notice) for use terms, disclaimers, disclosures, or restrictions related to SAP Materials for general audiences.